



# 02

## PLASTIC bag filter

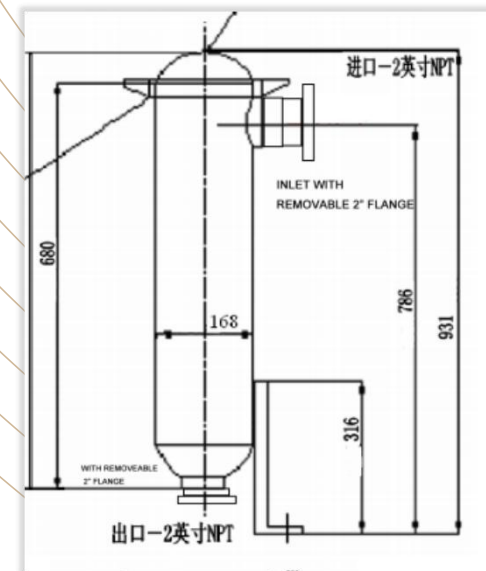


# Plastic BagFilter

## X100PP



- ✓ filter bag size: 05
- ✓ One piece of cylinder is formed, no dead corners
- ✓ Without any Metal parts; Suitable for corrosive liquids
- ✓ Removable Flange connection as needed



Type	Bag Size	Max Flow	Max Pressure	Max Temp.	Connection
X100PP	5 (6"*22")	90 GPM	6 BAR	80 C	2"F/2"NPT

# Plastic BagFilter



## X100PPN

- ✓ filter bag size: 05
- ✓ One piece of cylinder is formed, no dead corners
- ✓ Without any Metal parts; Suitable for corrosive liquids
- ✓ Hold higher working pressure

Type	Bag Size	Max Flow	Design Pressure	Max Temp.	Connection
X100PPN	5 (6"*22")	90 GPM	10 BAR	100 C	2"F



# Plastic BagFilter

## 2P-PP

- ✓ filter bag size: 02
- ✓ One piece of cylinder is formed, no dead corners
- ✓ Outlet has two directions for option
- ✓ Hold higher working pressure



Type	Bag Size	Max Flow	Design Pressure	Max Temp.	Connection
2P-PP	2 (7"*32")	180 GPM	10 BAR	100 C	2"F

# Plastic BagFilter



## 2P-PPN

- ✓ filter bag size: 02
- ✓ One piece of cylinder is formed, no dead corners
- ✓ Without any Metal parts; Suitable for corrosive liquids
- ✓ Hold higher working pressure
- ✓ Outlet direction has two options

Type	Bag Size	Max Flow	Design Pressure	Max Temp.	Connection
2P-PPN	2 (7"*32")	180 GPM	10 BAR	100 C	2" F

# Plastic BagFilter



## 2P-PPS

- ✓ filter bag size: 02
- ✓ One piece of cylinder is formed, no dead corners
- ✓ Top cover with screws, easy for changing bags.
- ✓ Hold higher working pressure
- ✓ Outlet direction has two options

Type	Bag Size	Max Flow	Design Pressure	Max Temp.	Connection
2P-PPS	2 (7"*32")	180 GPM	10 BAR	100 C	2" F

# Plastic BagFilter

## 2P-UPVC

- ✓filter bag size: 02
- ✓Material: UPVC
- ✓Suitable for corrosive liquids with no much pressure

Type	Bag Size	Max Flow	Max Pressure	Max Temp.	Connection
2P-UPVC	2 (7"*32")	180 GPM	6 BAR	80 C	2" F





# Plastic BagFilter



## 2S-PP

- ✓ filter bag size: 02
- ✓ One piece of cylinder is formed, no dead corners
- ✓ Suitable for corrosive liquids
- ✓ Hold higher working pressure
- ✓ Design Top Entry, No any side Leaking

Type	Bag Size	Max Flow	Design Pressure	Max Temp.	Connection
2P-2S	2 (7"*32")	180 GPM	10 BAR	100 C	3" F



# Plastic Cartridge Filter



## PP-3-20"

- ✓ filter cartridge: 20" x 3 pcs
- ✓ One piece of cylinder is formed, no dead corners
- ✓ Suitable for corrosive liquids
- ✓ Hold higher working pressure
- ✓ Design Top Entry, No any side Leaking



Type	cartridge	Max Flow	Design Pressure	Max Temp.	Connection
pp-3-20	3 (20")	15 m/h	8 BAR	80 C	DN 65

# Plastic Cartridge Filter

## 2A-0130

- ✓ filter cartridge size: **PALL 30"**
- ✓ One piece of cylinder is formed, no dead corners
- ✓ Suitable for corrosive liquids
- ✓ Hold higher working pressure
- ✓ Design Top Entry, No any side Leaking



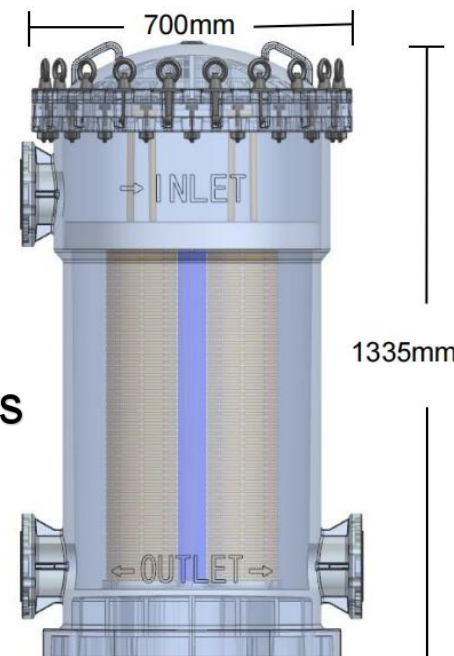
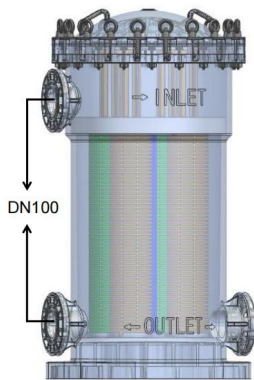
The image shows the components of the 2A-0130 Plastic Cartridge Filter. On the left is a green plastic top cap with a yellow handle. In the center is a white pleated filter cartridge. To the right of the cartridge is the main green plastic filter housing, which has a top entry port and two side ports. The housing has a yellow label with technical specifications. The entire assembly is set against a background of blue water splashes at the bottom.

Type	Size	Max Flow	Design Pressure	Max Temp.	Connection
2A-0130	30 ''*1	10 M3/H	10 BAR	100 C	DN50/65/80

# Plastic Cartridge Filter

## M0430

- ✓ filter cartridge size: **PALL 30"**
- ✓ One piece of cylinder is formed, no dead corners
- ✓ Suitable for corrosive liquids
- ✓ Hold higher working pressure
- ✓ Design Top Entry, No any side Leaking



Type	Size	Max Flow	Design Pressure	Max Temp.	Connection
M0430	30"*4	40 M3/H	8 BAR	100 C	DN100